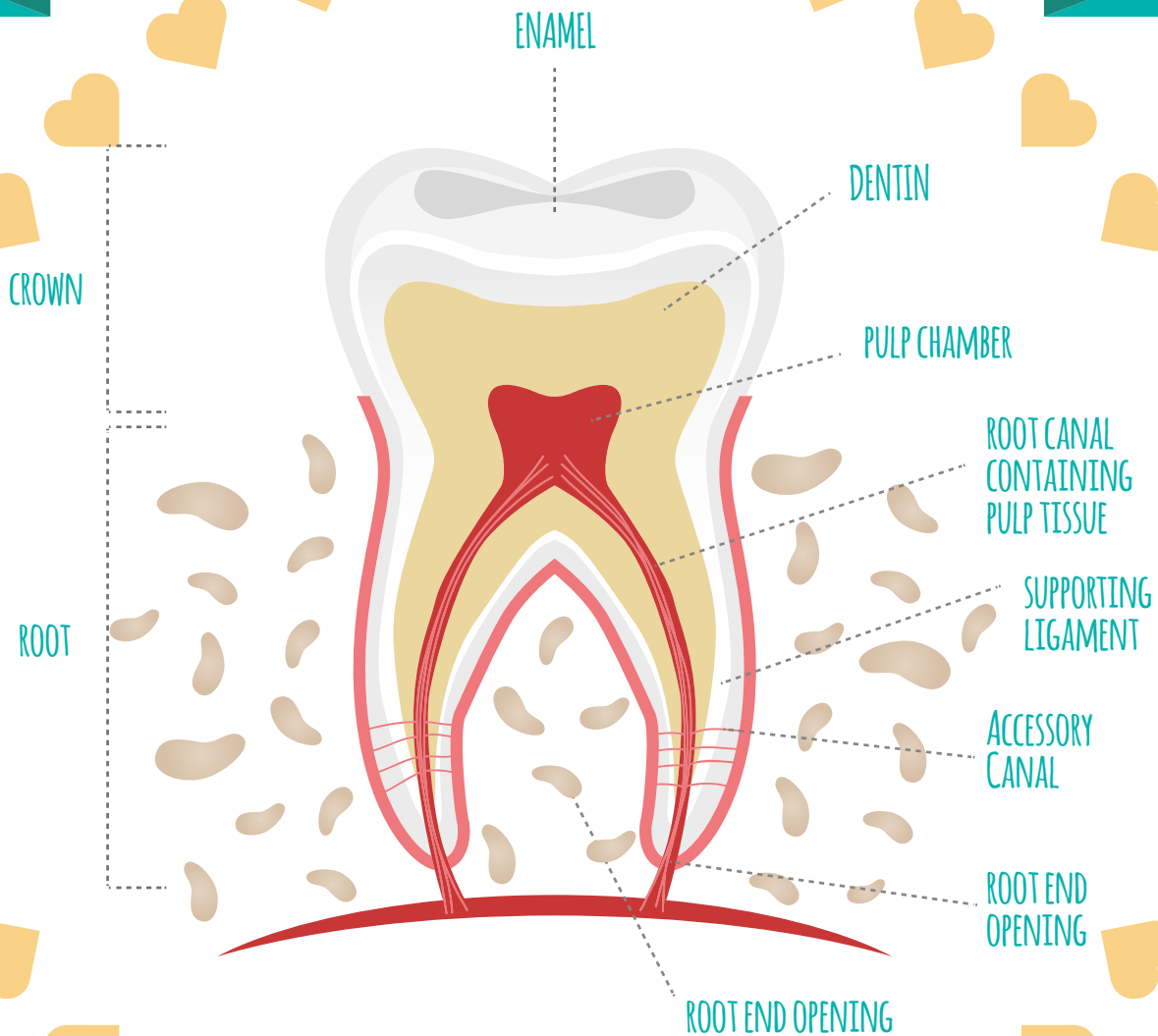
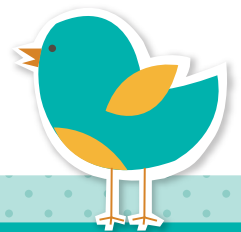


Anatomy of the Tooth



THE ELEMENTS OF A HUMAN TOOTH



SOME TOOTHY FACTS:

- ♥ FIRST TEETH ARE SMALLER AND BRIGHTER WHITE IN COLOUR THAN PERMANENT TEETH!
- ♥ THE PART OF THE TOOTH THAT YOU CAN SEE ABOVE THE GUM IS CALLED THE CROWN IT IS COVERED IN HARD, SHINY ENAMEL.
- ♥ ENAMEL IS THE HARDEST SUBSTANCE IN THE BODY AND PROTECTS THE MORE SENSITIVE INNER PARTS OF THE TOOTH.
- ♥ THE APPEARANCE OF YOUR TEETH IS HEREDITARY, SO IF YOU 'CUT' YOUR FIRST TEETH EARLY ITS LIKELY YOUR BABY WILL TOO.

Bickiepegs[®]
Healthcare
Experts in Oral Care since 1925

www.bickiepegs.com